



# GMT MONTHLY MEMBERSHIP PROGRESS REPORT

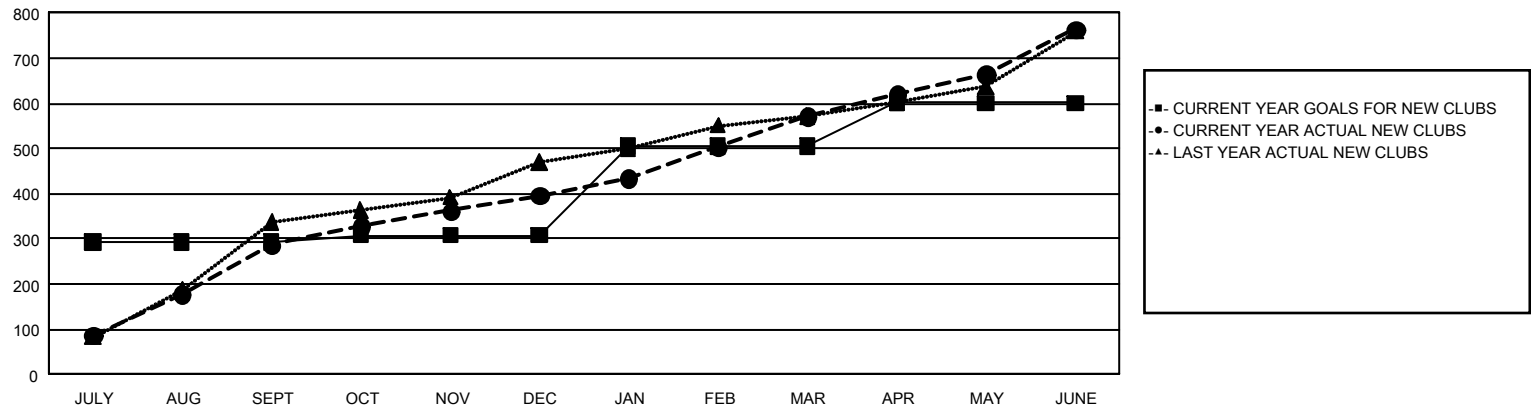
## GAT Constitutional Area 6 - India

Results as of: 6/30/2025

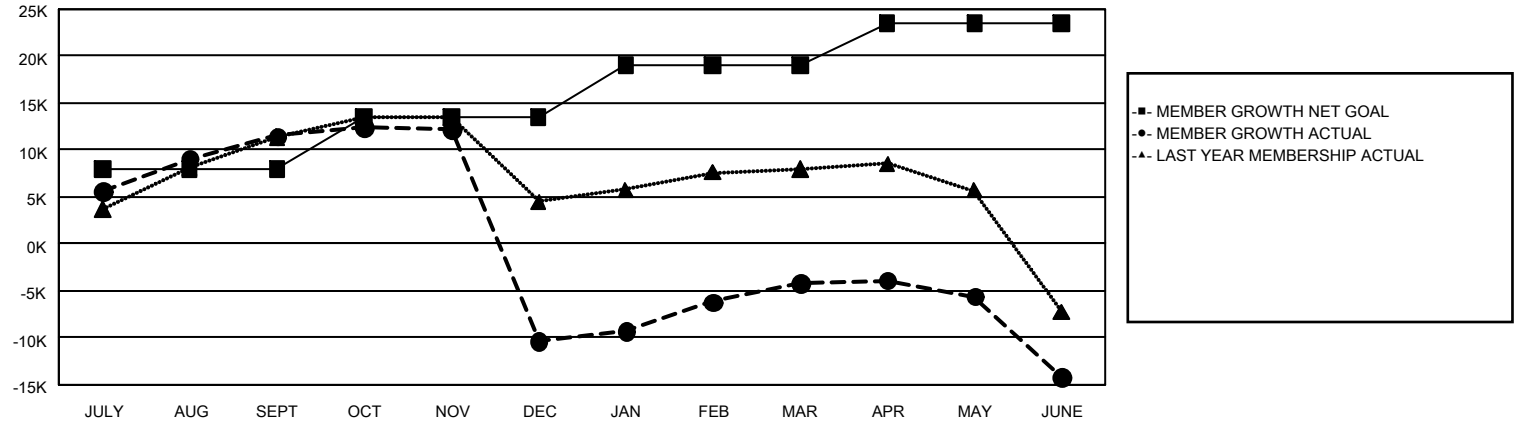
REPORT DOES NOT INCLUDE CLUBS IN UNDISTRICTED AREAS.

Clubs				Members			
RESULTS FOR 2024-2025				RESULTS FOR 2024-2025			
QUARTER	NEW CLUB GOAL	NEW CLUBS	DROPPED CLUBS	QUARTER	MEMBER GROWTH NET GOAL	MEMBER GROWTH ACTUAL	DROPPED MEMBERS ACTUAL (including transfers)
JULY/AUG/SEPT	293	287	72	JULY/AUG/SEPT	7,909	19,759	6,700
OCT/NOV/DEC	15	109	756	OCT/NOV/DEC	5,600	8,867	29,273
JAN/FEB/MAR	198	176	120	JAN/FEB/MAR	5,576	15,903	5,750
APR/MAY/JUNE	95	192	165	APR/MAY/JUNE	4,411	28,638	31,913

GOALS AND ACTUAL NEW CLUBS CUMULATIVE



GOALS AND ACTUAL MEMBERS CUMULATIVE



DROPPED CLUBS: 1,113	5,890 CLUBS OF 9,443 ADDED 1 OR MORE NEW MEMBERS	GENDER DISTRIBUTION	
		MALE	203,277 (73.67%)
		FEMALE	72,589 (26.31%)
DROPPED MEMBERS	<a href="#">CLICK HERE FOR CUMULATIVE MEMBERSHIP DATA</a>	TOTAL FAMILY UNIT MEMBERS	
DECEASED			95,127
CLUB CANCELLED		FAMILY MEMBERS PAYING HALF DUES	
OTHER			55,880
TOTAL			